

PUNTO eMANUAL

Gearbox & differential

Title	Page
Diagrams	1 ➡

DIAGRAM SHOWING EXTERNAL CONTROLS

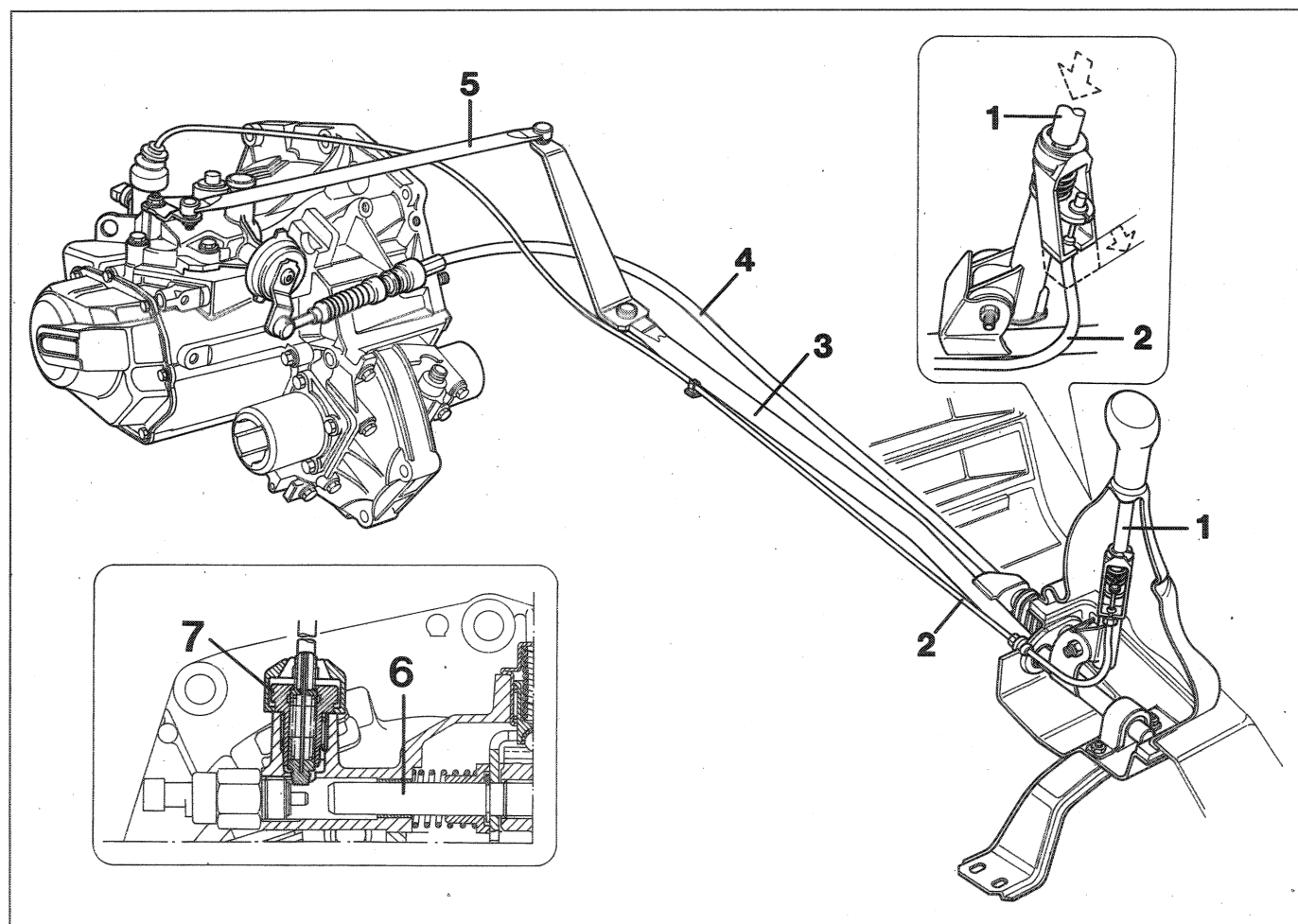
A new type gearbox is fitted on the 1108 and 1242 versions which has a new external controls system composed of a rigid rod (3) and a flexible cable (4).

The rigid rod (3) controls the selection of the gears through an idler rod (5); the flexible cable, on the other hand, controls the engagement of the gears.

A safety device (7) has also been introduced which is designed to prevent the accidental engagement of reverse gear.

In order to operate this device it is necessary to press the gear lever knob (1) downwards and, by means of a cable (2), the push rod device (7) is raised and this, in turn, allows the travel of the control shaft (6) to select reverse gear.

The same system is used for the 6 speed gearbox, fitted on the 1108 version.



P3M030B01

Diagrammatic view of external gearbox controls with device for inhibiting accidental engagement of reverse gear.

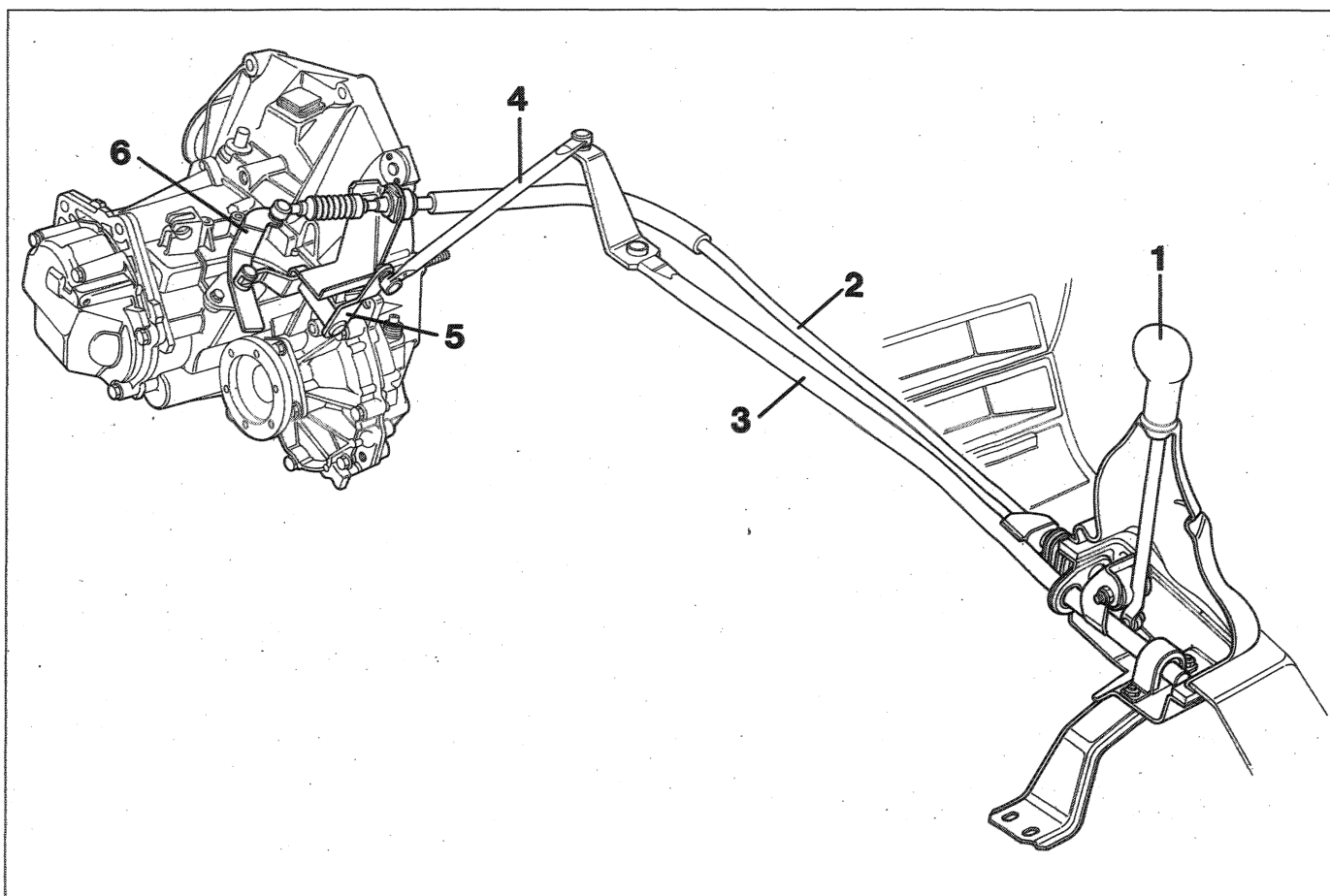
1. Sliding part of gear lever
2. Flexible cable controlling device for inhibiting accidental engagement of reverse gear
3. Gear selector control rod
4. Gear engagement control cable
5. Gear selector control rod
6. Selector and engagement control shaft
7. Device for inhibiting accidental engagement of reverse gear

DIAGRAM SHOWING EXTERNAL CONTROLS

The external controls fitted on the 1372 turbo and 1697 TD versions are composed of a rigid rod (3) and a flexible cable (2).

The rigid rod (3) controls the selection of the gears via an idler rod (4); the flexible cable (2), on the other hand, controls the engagement of the gears.

Both the flexible cable and the rod cannot be adjusted.



P3M031B01

Diagrammatic view of external gearbox controls

1. Gear control lever
2. Gear engagement flexible control cable
3. Gear selector control rod
4. Gear selector control rod
5. Gear selector lever
6. Gear engagement lever