

PUNTO eMANUAL

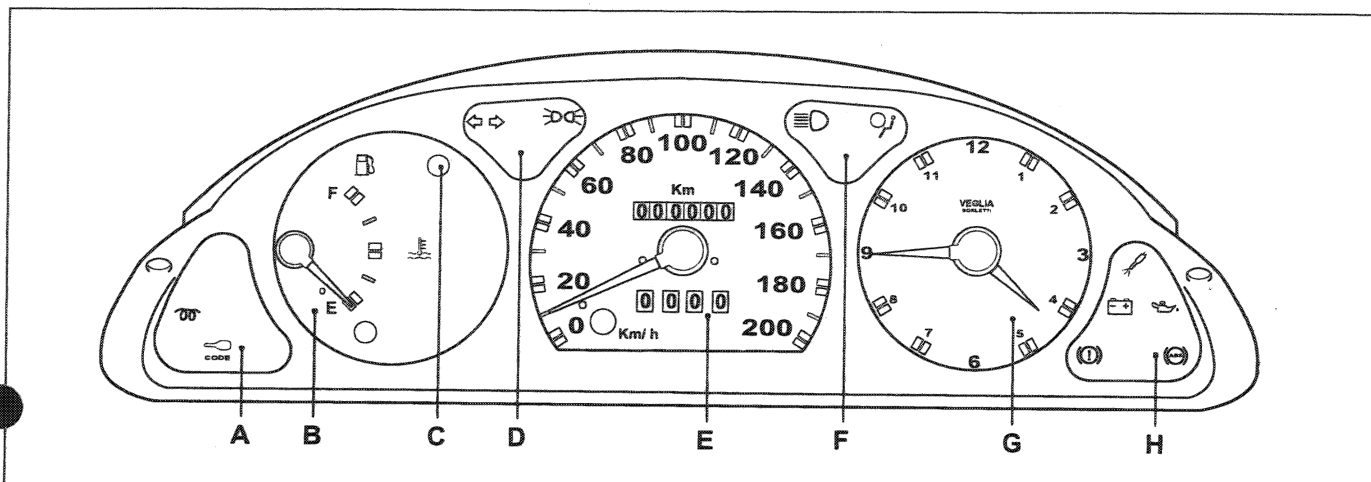
Electrical Equipment

Title	Page
Views - S	1 ➡
Wiring diagrams	2 ➡
Views - SX	3 ➡
Wiring diagrams	4 ➡
Views - ELX	5 ➡
Wiring diagrams	6 ➡
Views - GT	8 ➡
Wiring diagrams	9 ➡

55.

FRONT/REAR VIEWS OF INSTRUMENT PANELS WITH DESCRIPTION OF RELEVANT CABLES AND CONNECTORS

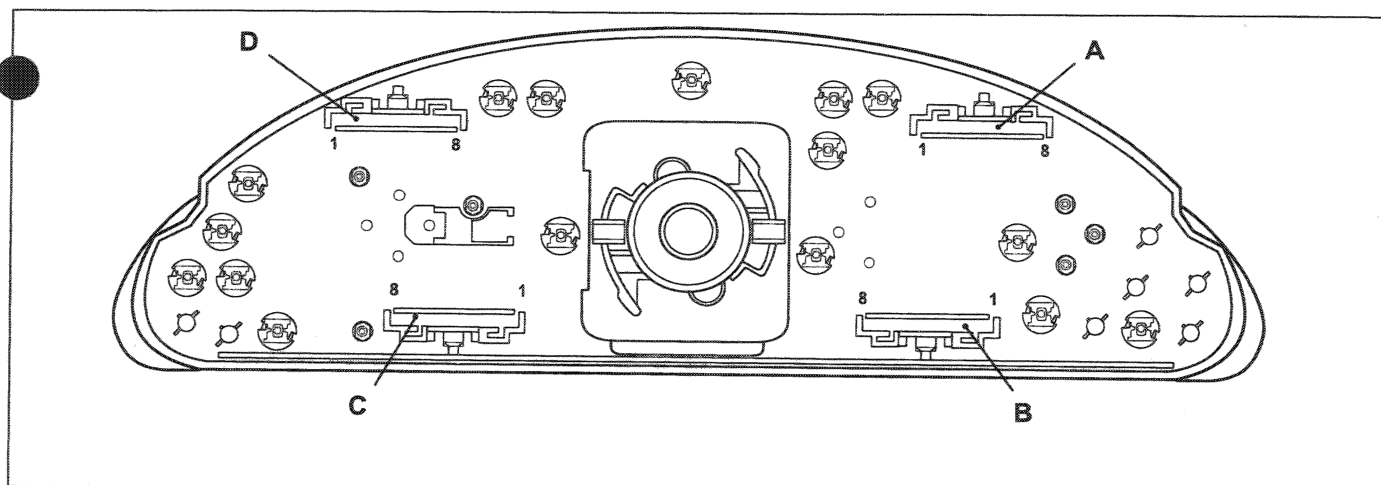
Version: S



P3M04XL01

Front side of instrument panel

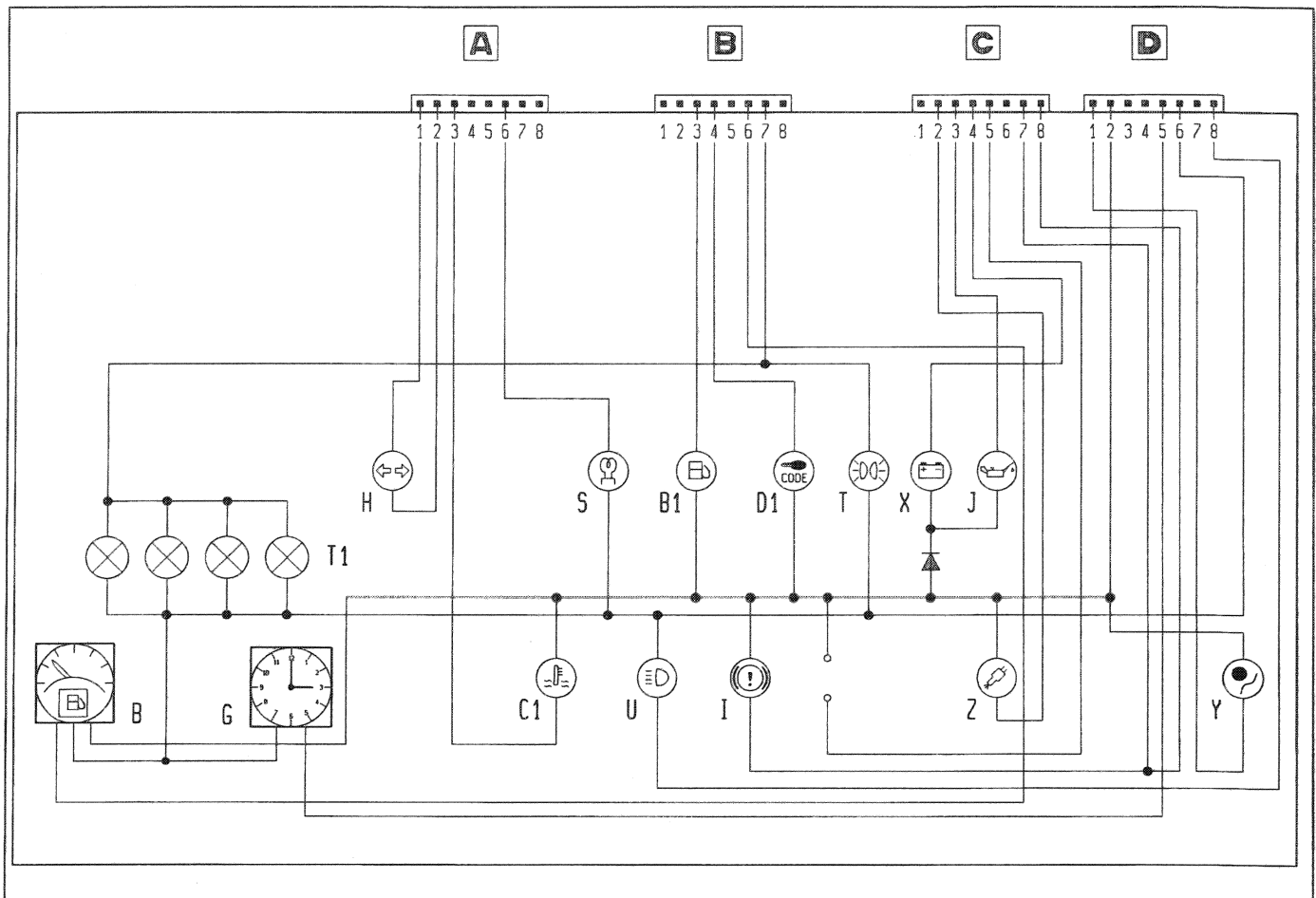
- A) - Fiat-Code fault warning light, plug preheating warning light
- B) - Fuel level gauge and reserve warning light
- C) - Water temperature warning light
- D) - Direction indicators warning light, side lights warning light
- E) - Speedometer and mileometer
- F) - Main beam headlamps warning light, AIR-BAG circuit fault warning light
- G) - Clock
- H) - Fuel injection fault warning light, low generator charge warning light, low engine oil pressure warning light, handbrake on warning light, anti-lock braking system fault warning light (A.B.S.)



P3M04XL02

Rear side of instrument panel (the connector sockets are shown)

Wiring diagram of instrument panel internal connections (S version)



P3M05XL01

CABLE COLOURS AND DESCRIPTION OF THE CIRCUITS CONNECTED TO EACH INDIVIDUAL CONNECTOR

CONNECTOR A		
No. of pins	Cable colour	Circuit involved
1	A	Direction indicators warning light (H)
2	AN	Direction indicators warning light (H)
3	HB	Maximum coolant temperature warning light (C1)
4	—	Not connected
5	—	Not connected
6	LG	Heater plugs warning light (S)
7	—	Not connected
8	—	Not connected

CONNECTOR B		
No. of pins	Cable colour	Circuit involved
1	—	Not connected
2	—	Not connected
3	S	Fuel reserve warning light (B1)
4	BL	Fiat-Code fault warning light (D1)
5	—	Not connected
6	HR	Fuel gauge control (B)
7	GN	Side lights warning light (T)
8	—	Not connected

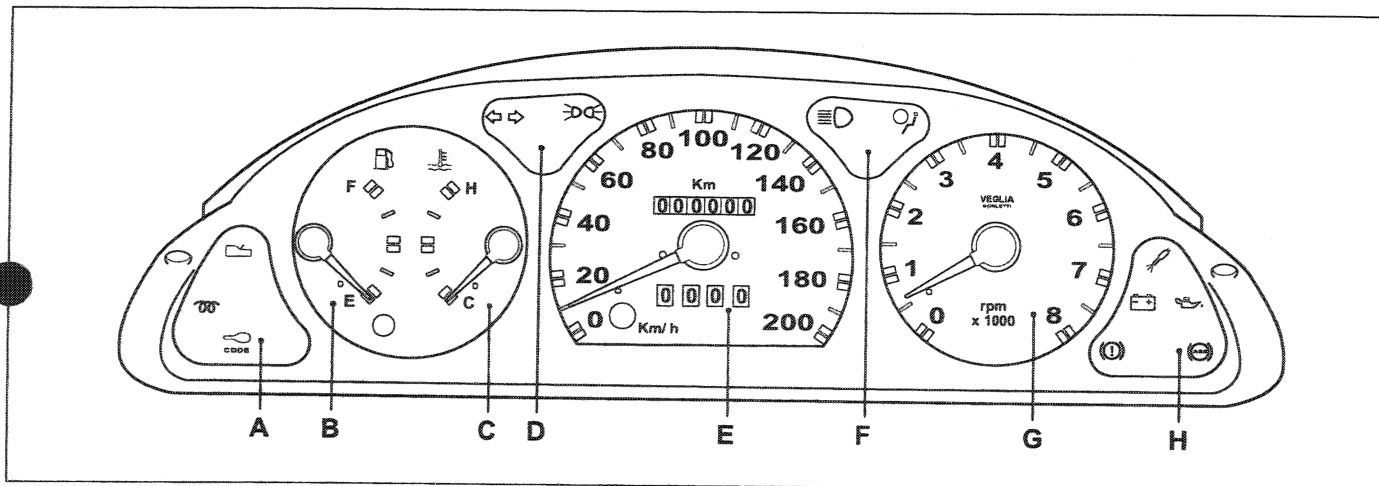
55.

CONNECTOR C		
No. of tag terminals	Cable colour	Circuit involved
1	—	Not connected
2	LR	Fuel injection fault warning light (Z)
3	HG	Low engine oil pressure warning light (J)
4	HN	Low battery charge warning light (X)
5	ZB	Anti-lock braking system (A.B.S.) fault warning light (wiring)
6	—	Not connected
7	BR	Handbrake warning light (I)
8	BN	Low brake fluid level warning light (I)

CONNECTOR D		
No. of pins	Cable colour	Circuit involved
1	S	AIR-BAG circuit fault warning light (Y)
2	AR	+ 15 shared (protected)
3	—	Not connected
4	—	Not connected
5	R	+ Clock (G)
6	N	Shared earth
7	—	Not connected
8	LB	Main beam headlamps warning light (U)

FRONT/REAR VIEWS OF INSTRUMENT PANELS WITH DESCRIPTION OF RELEVANT CABLES AND CONNECTORS

Version: SX



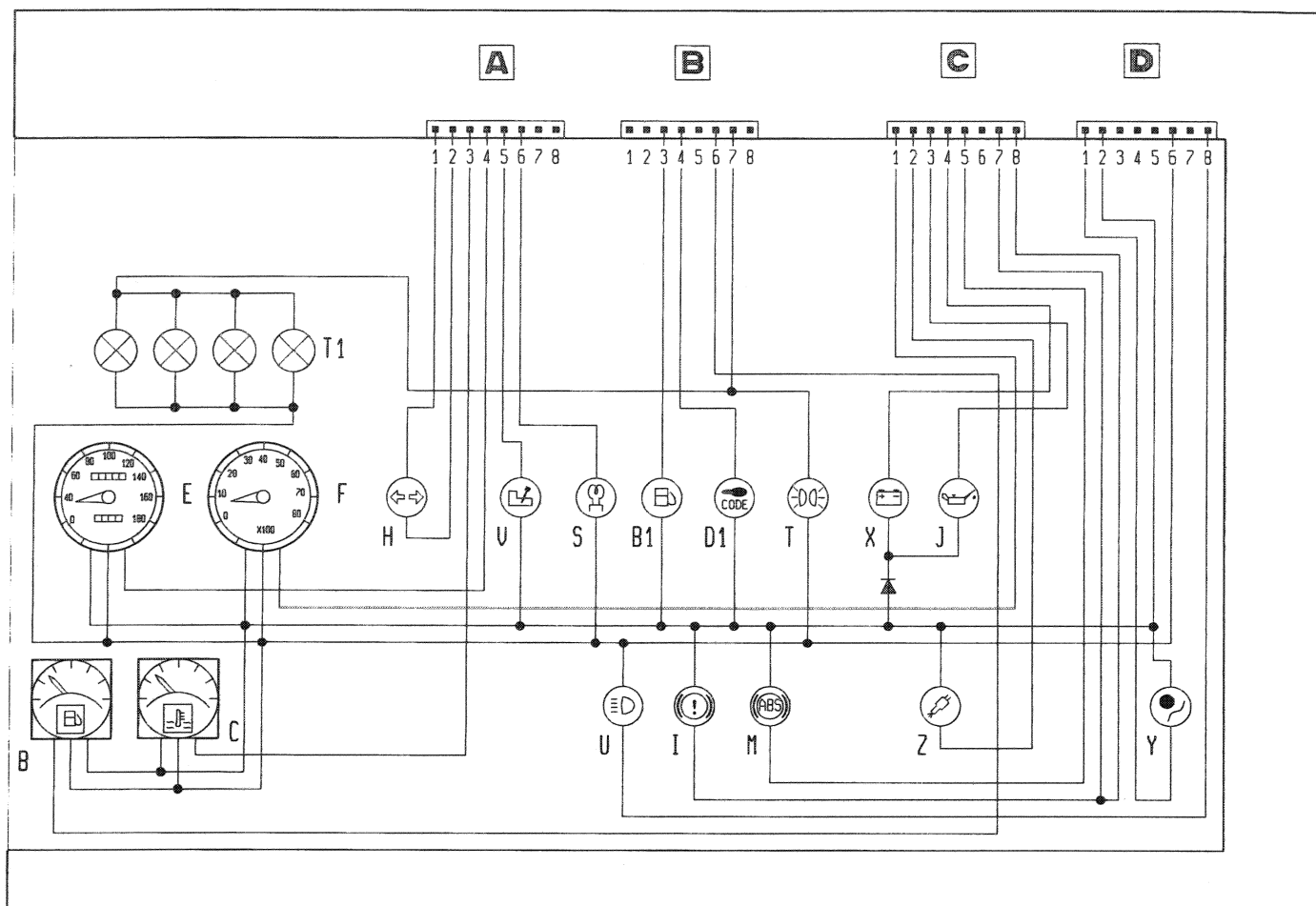
Front view of instrument panel

P3M06XL01

- A) - Fiat-Code fault warning light, heater plugs warning light, automatic transmission fault warning light
- B) - Fuel level gauge and reserve warning light
- C) - Water temperature gauge
- D) - Direction indicators warning light, side lights warning light
- E) - Speedometer and mileometer
- F) - Main beam headlamps warning light, AIR BAG circuit fault warning light
- G) - Rev counter (on diesel versions, the full scale is 6000 rpm)
- H) - Fuel injection fault warning light, low generator recharging warning light, low engine oil pressure warning light, handbrake on warning light, anti-lock braking system (A.B.S.) fault warning light

NOTE The connector sockets on the rear of the instrument panel are identical to the S version

Wiring diagram of internal connections of instrument panel (SX version)



P3M07XL01

CABLE COLOURS AND DESCRIPTION OF CIRCUITS CONNECTED TO EACH INDIVIDUAL CONNECTOR

CONNECTOR A		
No. of pins	Cable colour	Circuit involved
1	A	Direction indicators warning light (H)
2	AN	Direction indicators warning light (H)
3	HB	Engine coolant overheating warning light (C)
4	AB	Speedometer signal (E)
5	-	Automatic gearbox oil overheating warning light (V)
6	LG	Heater plugs warning light (S)
7	-	Not connected
8	-	Not connected

CONNECTOR B		
No. of pins	Cable colour	Circuit involved
1	-	Not connected
2	-	Not connected
3	S	Fuel reserve warning light (B1)
4	BL	Fiat-Code fault warning light (D1)
5	-	Not connected
6	HR	Fuel gauge control (B)
7	GN	Side lights warning light (T)
8	-	Not connected

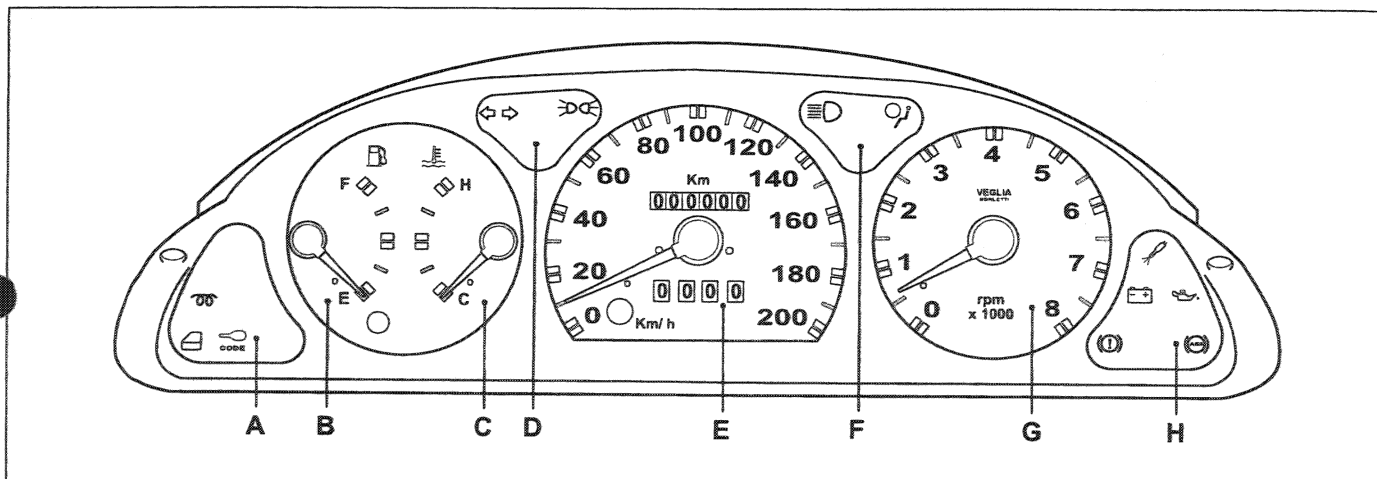
55.

CONNECTOR C		
No. of pins	Cable colour	Circuit involved
1	L	Rev counter signal (F)
2	LR	Fuel injection fault warning light (Z)
3	HG	Low engine oil pressure warning light (J)
4	HN	Low battery charge warning light (X)
5	ZB	Anti-lock braking system (A.B.S.) fault warning light (M)
6	–	Not connected
7	BR	Handbrake on warning light (I)
8	BN	Low brake fluid level warning light (I)

CONNECTOR D		
No. of pins	Cable colour	Circuit involved
1	S	AIR BAG circuit fault warning light (Y)
2	AR	+ 15 shared (protected)
3	–	Not connected
4	–	Not connected
5	–	Not connected
6	N	Shared earth
7	–	Not connected
8	LB	Main beam headlamps warning light (U)

FRONT/REAR VIEWS OF INSTRUMENT PANELS WITH DESCRIPTION OF RELEVANT CABLES AND CONNECTORS

Version: ELX



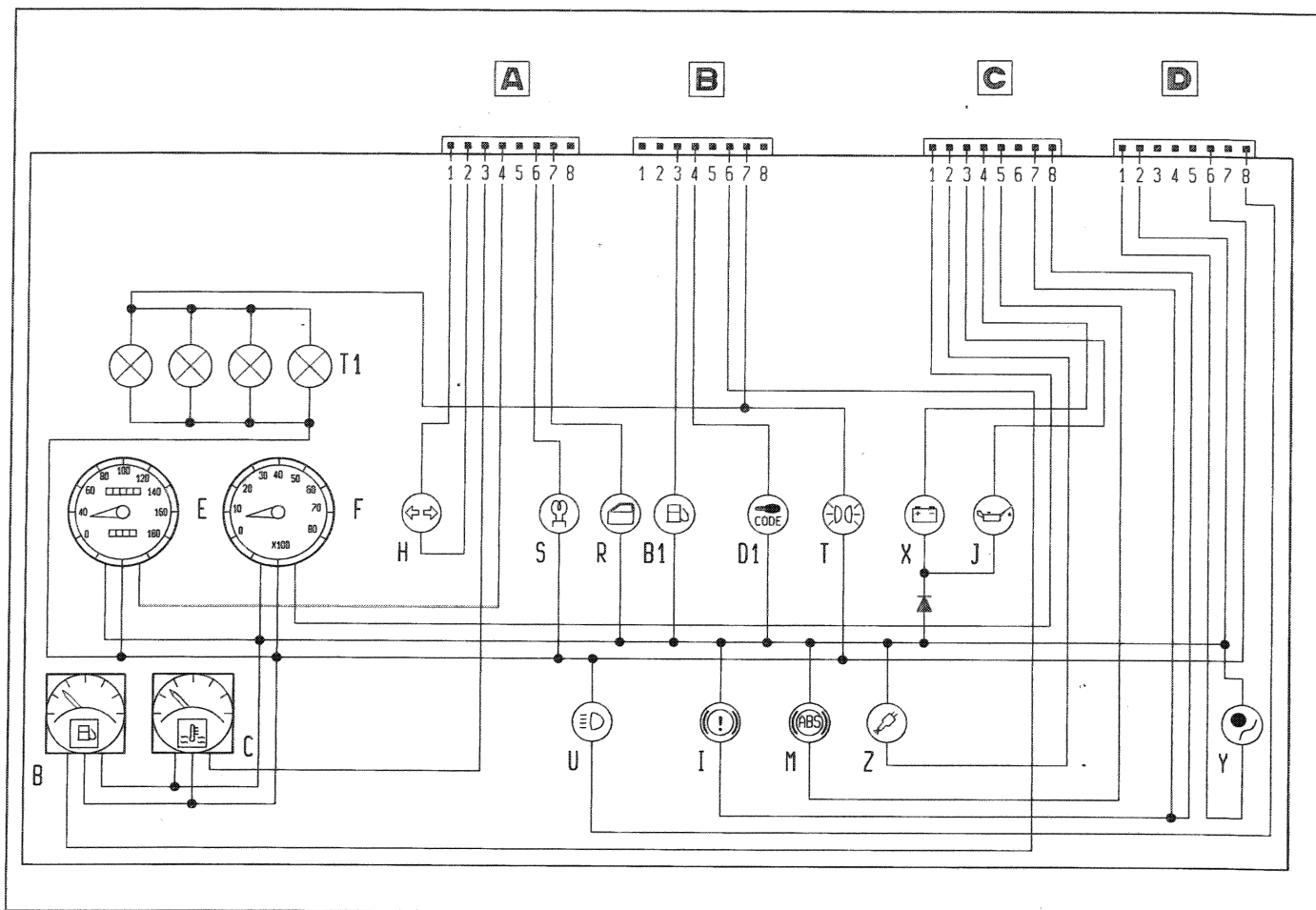
Front side of instrument panel

P3M08XL01

- A) - Fiat-Code fault warning light, heater plugs warning light, door open warning light
- B) - Fuel level gauge and reserve warning light
- C) - Water temperature gauge
- D) - Direction indicators warning light, side lights warning light
- E) - Speedometer and mileometer
- F) - Main beam headlamps warning light, AIR BAG circuit fault warning light
- G) - Rev counter (on diesel versions, the full scale is 6000 rpm)
- H) - Fuel injection fault warning light, low generator charge warning light, low engine oil pressure warning light, handbrake on warning light, anti-lock braking system (A.B.S.) fault warning light

NOTE The connector sockets on the rear of the instrument panel are identical to the S version

Wiring diagram of internal connections of instrument panel (ELX version)



P3M09XL01

CABLE COLOURS AND DESCRIPTION OF THE CIRCUITS CONNECTED TO EACH INDIVIDUAL CONNECTOR

CONNECTOR A		
No. of pins	Cable colour	Circuit involved
1	A	Direction indicators warning light (H)
2	AN	Direction indicators warning light (H)
3	HB	Engine coolant overheating warning light (C)
4	AB	Signal for speedometer (E)
5	—	Not connected
6	LG	Heater plugs warning light (S)
7	V	Door open indicator (R)
8	—	Not connected

CONNECTOR B		
No. of pins	Cable colour	Circuit involved
1	—	Not connected
2	—	Not connected
3	S	Fuel reserve warning light (B1)
4	BL	Fiat-Code fault warning light (D1)
5	—	Not connected
6	HR	Fuel gauge control (B)
7	GN	Side lights warning light (T)
8	—	Not connected

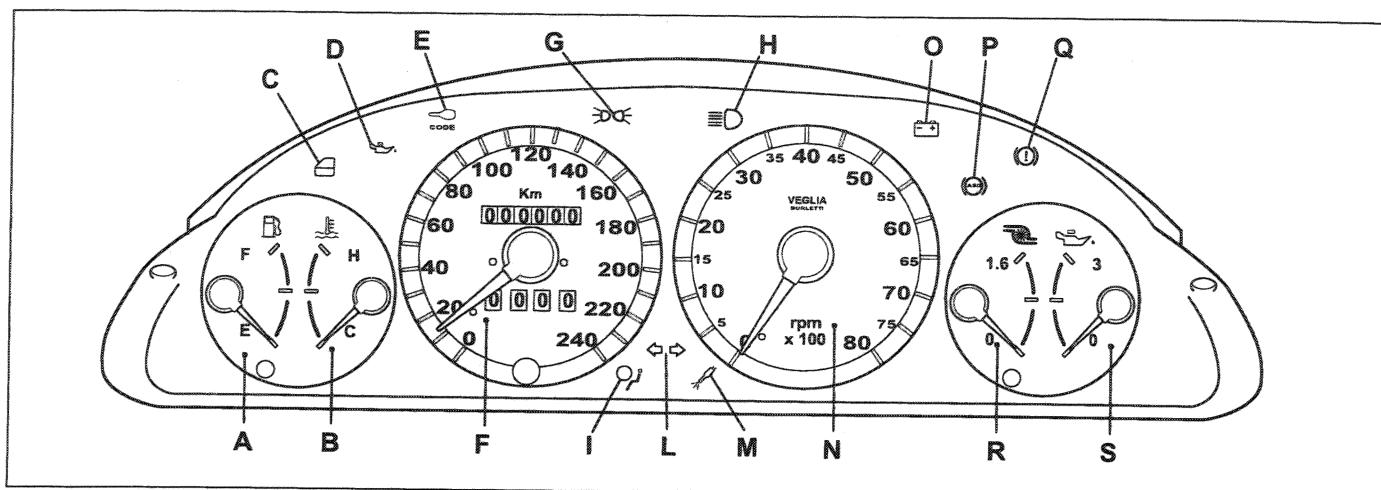
55.

CONNECTOR C		
No. of pins	Cable colour	Circuit involved
1	L	Rev counter signal (F)
2	LR	Fuel injection fault warning light (Z)
3	HG	Low engine oil pressure warning light (J)
4	HN	Low battery charge warning light (X)
5	ZB	Anti-lock braking system (A.B.S.) fault warning light (M)
6	—	Not connected
7	BR	Handbrake warning light (I)
8	BN	Low brake fluid level warning light (I)

CONNECTOR D		
No. of pins	Cable colour	Circuit involved
1	S	AIR BAG circuit fault warning light (Y)
2	AR	+ 15 shared (protected)
3	—	Not connected
4	—	Not connected
5	—	Not connected
6	N	Shared earth
7	—	Not connected
8	LB	Main beam headlamps warning light (U)

FRONT/REAR VIEWS OF INSTRUMENT PANELS WITH DESCRIPTION OF RELEVANT CABLES AND CONNECTORS

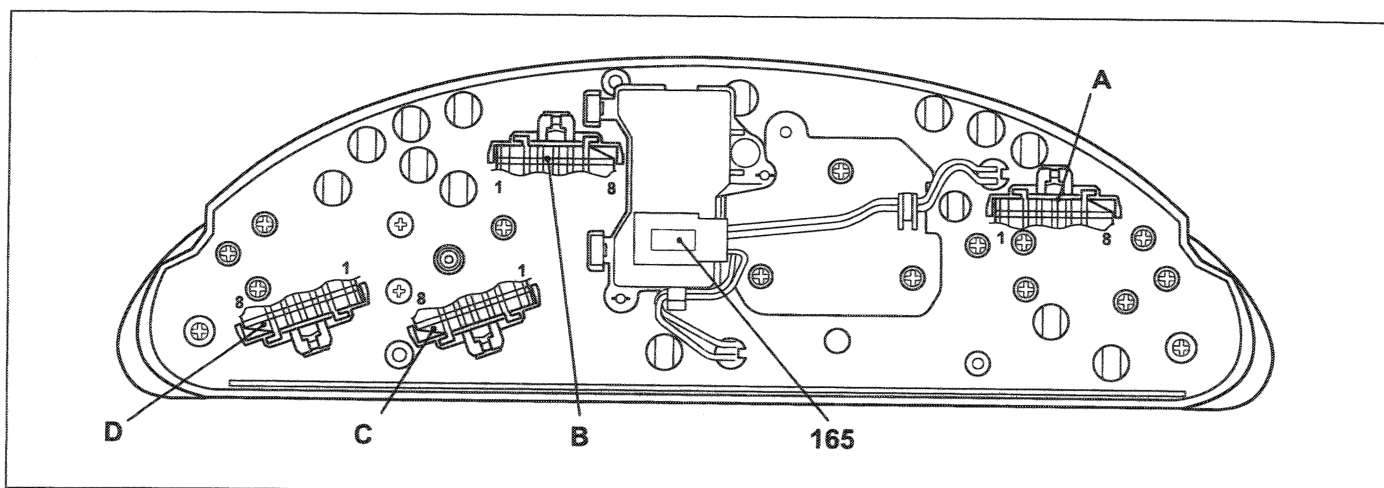
Version: GT



P3M11XL01

Front side of instrument panel

- | | |
|---|--|
| A) - Fuel level gauge and reserve warning light | I) - AIR BAG circuit fault warning light |
| B) - Water temperature gauge | L) - Direction indicators warning light |
| C) - Door open warning light | M) - Fuel injection fault warning light |
| D) - Low engine oil pressure warning light | N) - Rev counter |
| E) - Fiat-Code fault warning light | O) - Low generator charge warning light |
| F) - Speedometer and mileometer | P) - Anti-lock braking system (A.B.S.) fault warning light |
| G) - Side lights warning light | Q) - Handbrake on warning light |
| H) - Main beam headlamps warning light | R) - Turbocharging pressure warning light |
| | S) - Oil pressure gauge |

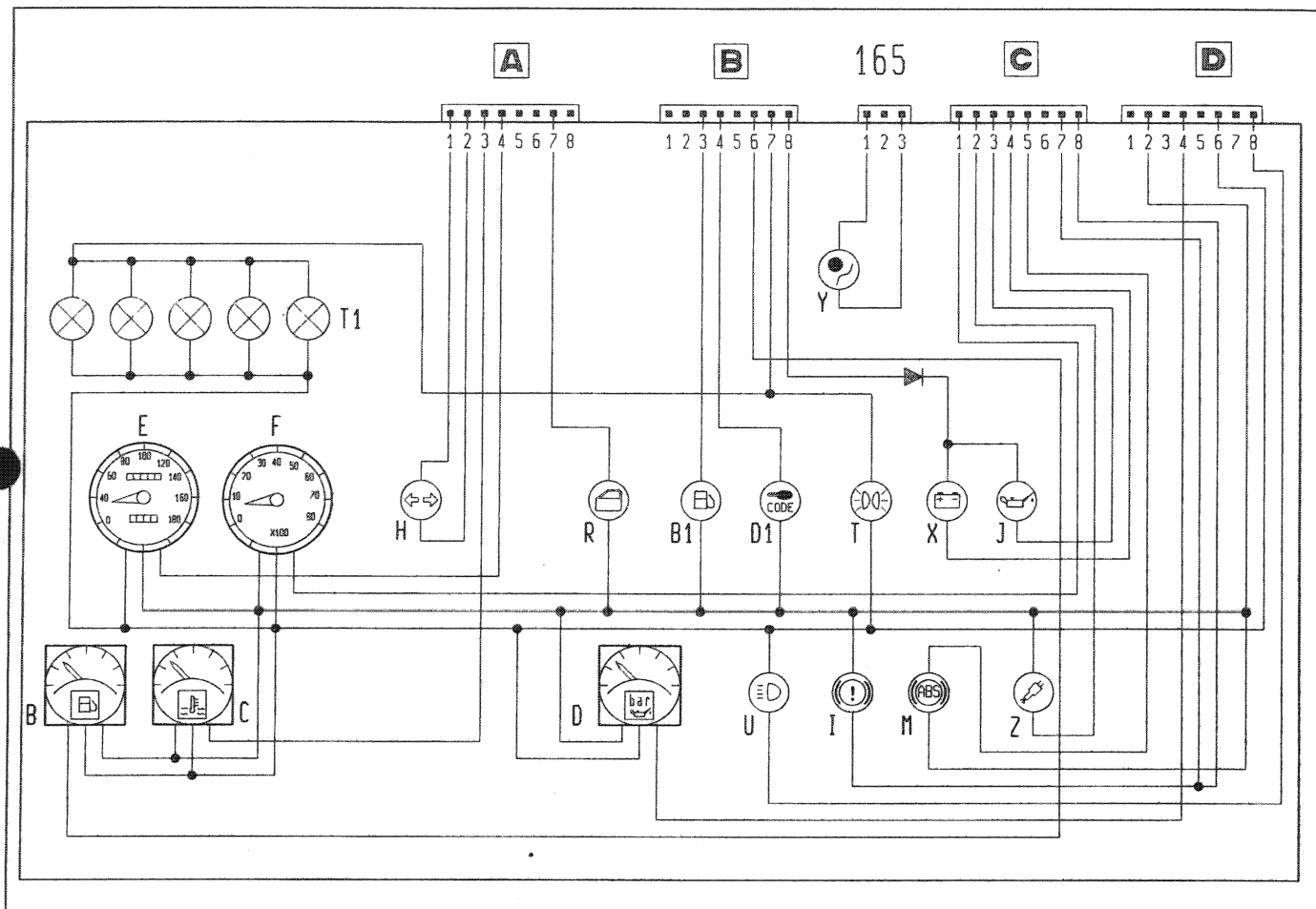


P3M11XL02

Rear side of instrument panel (the connector sockets are shown)

55.

Wiring diagram of internal connections of instrument panel (GT version)



P3M12XL01

CABLE COLOURS AND DESCRIPTION OF CIRCUITS CONNECTED TO EACH INDIVIDUAL CONNECTOR

CONNECTOR A		
No. of pins	Cable colour	Circuit involved
1	A	Direction indicators warning light (H)
2	AN	Direction indicators warning light (H)
3	HB	Engine coolant overheating warning light (C)
4	AB	Signal for speedometer (E)
5	-	Not connected
6	-	Not connected
7	V	Door open warning light (R)
8	-	Not connected

CONNECTOR B		
No. of pins	Cable colour	Circuit involved
1	-	Not connected
2	-	Not connected
3	S	Fuel reserve warning light (B1)
4	BL	Fiat-Code fault warning light (D1)
5	-	Not connected
6	HR	Fuel gauge control (B)
7	GN	Side lights warning light (T)
8	AR	+ 15 (not protected)

CONNECTOR C		
No. of pins	Cable colour	Circuit involved
1	L	Rev counter signal (F)
2	LR	Fuel injection fault warning light (Z)
3	HG	Low engine oil pressure warning light (J)
4	HN	Low battery charge warning light (X)
5	ZB	Anti-lock braking system (A.B.S.) fault warning light (M)
6	—	Not connected
7	BR	Handbrake warning light (I)
8	BN	Low brake fluid warning light (I)

CONNECTOR D		
No. of pins	Cable colour	Circuit involved
1	—	Not connected
2	AR	+ 15 shared (protected)
3	—	Not connected
4	MV	Engine oil pressure signal (D)
5	—	Not connected
6	N	Shared earth
7	—	Not connected
8	LB	Main beam headlamps warning light (U)

AIR BAG CONNECTOR (165)		
No. of pins	Cable colour	Circuit involved
1	S	+ 15 shared (protected)
2	—	Not connected
3	AR	AIR BAG circuit fault warning light