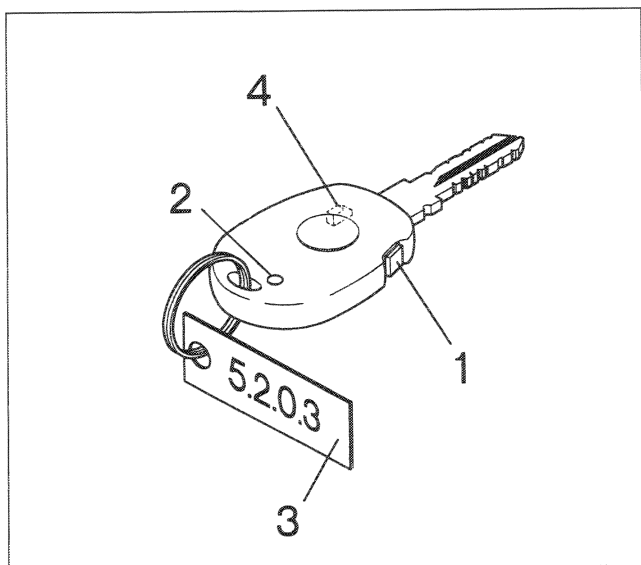


PUNTO eMANUAL

Electrical Equipment

Title	Page
Remote control & receiver	1 ➡
Programming	2 ➡

REMOTE CONTROL



P3M03ML02

The remote control, incorporated in the key, is an electronic device which sends the receiver, located in the luggage compartment, a signal which is suitable for opening/closing the doors.

Each time the control button (1) is pressed, the remote control sends a radio code with an operating range of about 10 metres.

1. Control button
2. Repeater LED
3. Password code plate
4. Transponder (used by Fiat CODE - not visible)

NOTE *This remote control is the same as the one used for the alarm system, therefore for anything not dealt with, refer to the description on the previous pages. The two programming methods are illustrated below:*

- **SIMPLIFIED PROGRAMMING** and **PROTECTED PROGRAMMING**.

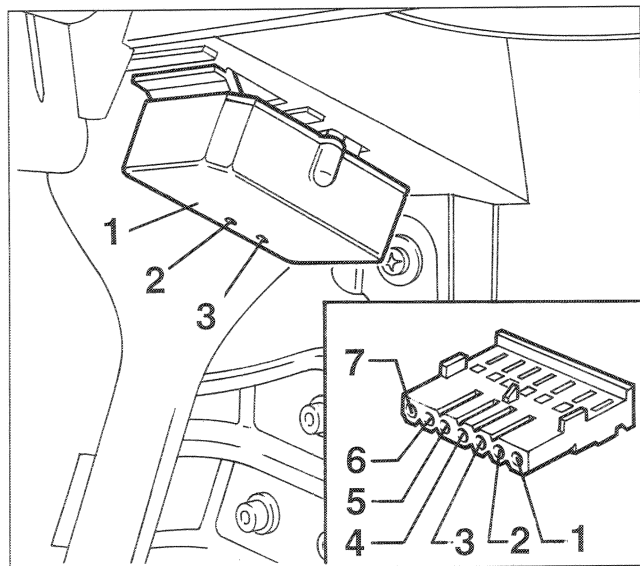
RECEIVER

The receiver, located in the luggage compartment, is an electronic device which receives the signal coming from the remote control. It carries out the function of controlling the opening/closing of the doors. Each receiver can be programmed with one or more remote controls (it should be remembered, however, that only the last 8 remain) programming the codes.

There is a green LED (3) in the receiver which comes on when the signal is received, whilst a special button (2) allows the code to be programmed.

When the receivers are fitted in the vehicle they contain a "UNIVERSAL" code which is used in carrying out the tests at the end of the production line with a special remote control with a universal code.

When the vehicle is handed over to the Customer the receiver has to be personalized by replacing the "UNIVERSAL" code with the ones for the remote controls which come with the vehicle (see "PROGRAMMING" overleaf).



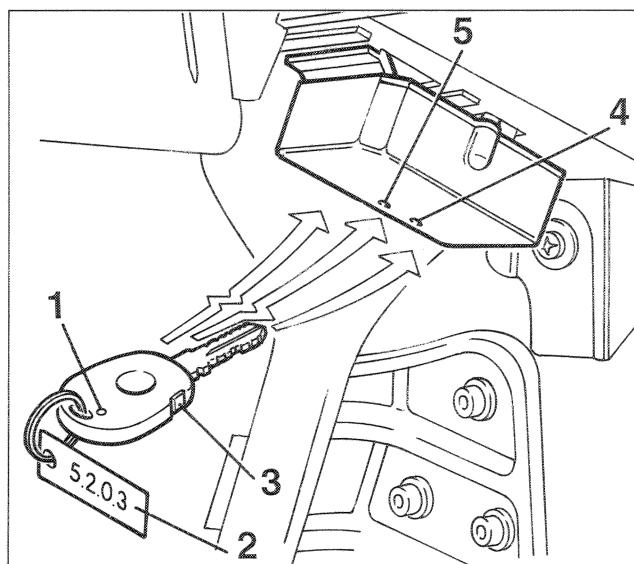
P3M03ML01

1. Receiver
2. Programming button
3. Green LED

Receiver connector

1. Not connected
2. Preparation for alarm system
3. Positive from battery (+30)
4. Earth
5. Door unlocking
6. Door locking
7. Positive controlled by the ignition (+15)

55.



SIMPLIFIED PROGRAMMING

The remote control should always be programmed (see description on previous page 7 - from point 1 to point 5) with the ignition switched removed or in the OFF/PARK position.

NOTE *To programme further remote controls, repeat the operations described above.*

With this programming system an unlimited number of codes for the remote controls are "recognized", but only the last 8 remain in the memory.

1. Remote control LED
2. 4 figure password code
3. Control button in remote control
4. Green LED in receiver
5. Programming button

PROTECTED PROGRAMMING

If the memory is "closed", further codes for remote controls can only be introduced after the memory has been "opened" with one of the codes for the keys programmed in the receiver.

OPENING THE MEMORY AND PROGRAMMING A NEW REMOTE CONTROL

Opening the memory

The memory should be opened by carrying out the operations from 1 to 6 described on page 9.

Programming a new remote control

A new remote control should be programmed by following operations 7 to 10 on page 9.



After programming the new remote control, the memory returns to the "closed" state.