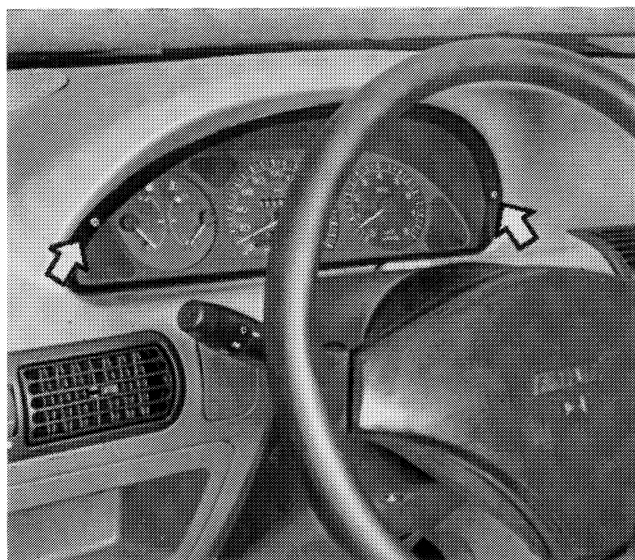


# PUNTO eMANUAL

Electrical Equipment

Title	Page
Removing/refitting instrument panel .....	1 ➡
Views .....	4 ➡

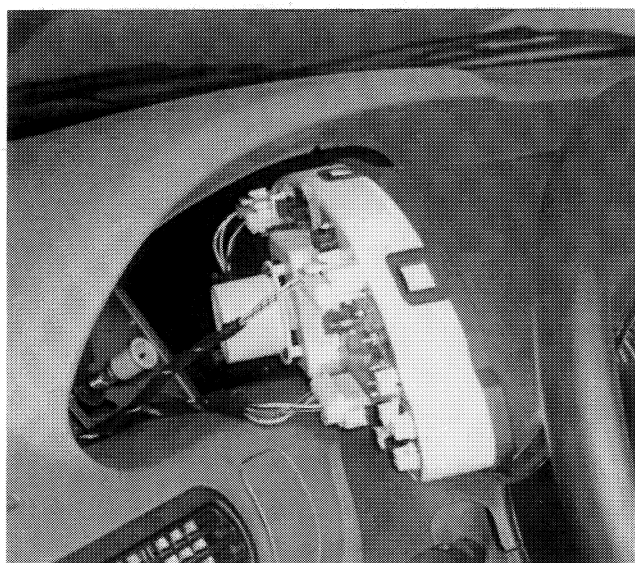


P3M059L01



## REMOVING-REFITTING

- Undo the screws securing the panel to the dashboard;



P3M059L02



- gently withdraw the panel from its seating;
- disconnect the trip recorder and speedometer cable and the supply connectors from the instrument panel;

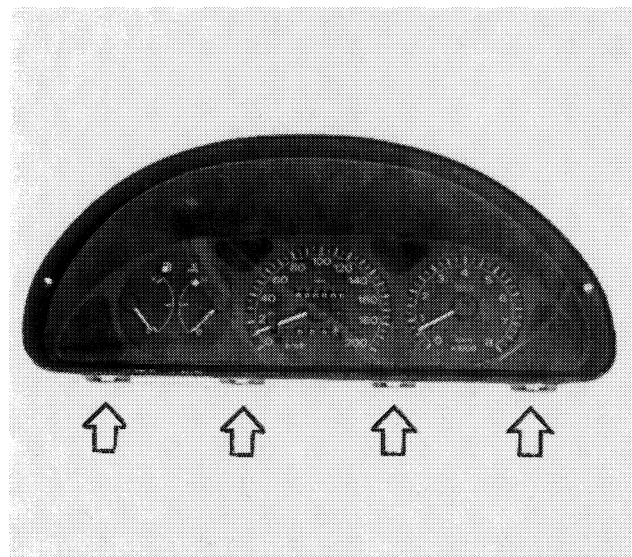


P3M059L03



- remove the instrument panel from the dashboard;

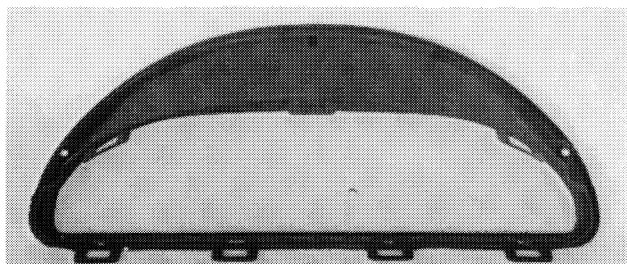
55.



P3M060L01

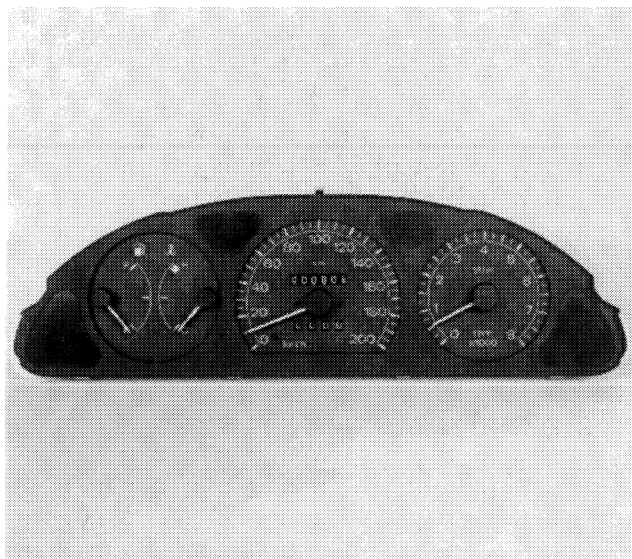


### DISMANTLING-FITTING

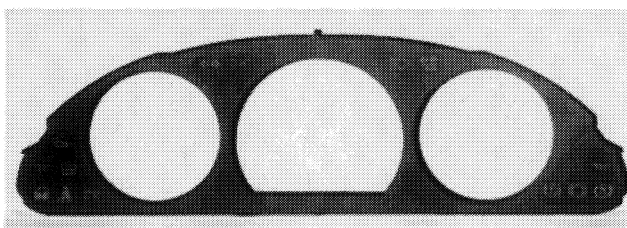


P3M060L02

- Remove the panel as described on the preceding page;
- using a screwdriver, disengage the retaining clips on the front of the panel;

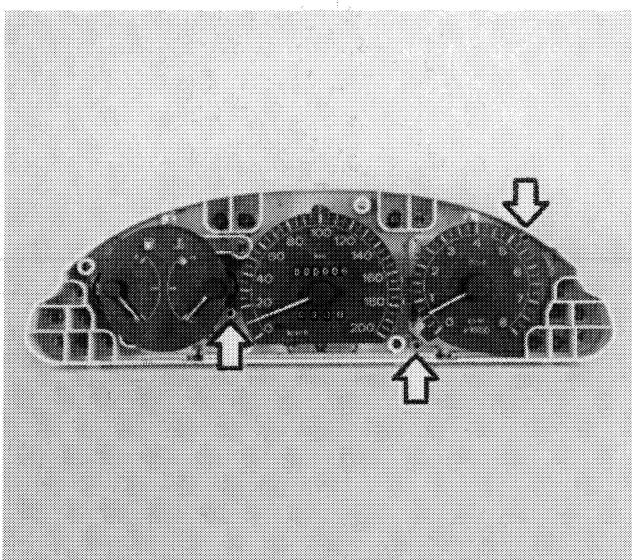


P3M060L03



P3M060L04

- separate the instrument frame from the instrument panel;

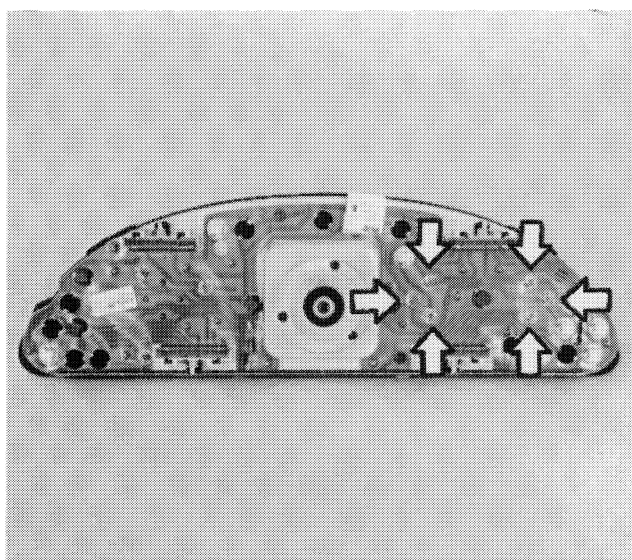


P3M060L05

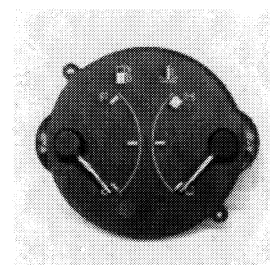
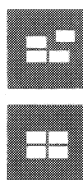


- undo the instrument attachment screws in order to remove the instruments;

**NOTE** To remove the instruments, undo each instrument's attachment nuts or screws from the rear of the panel.



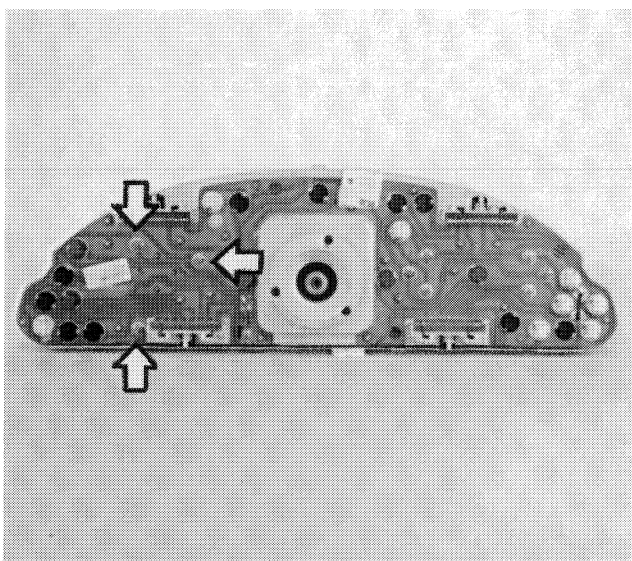
P3M061L01



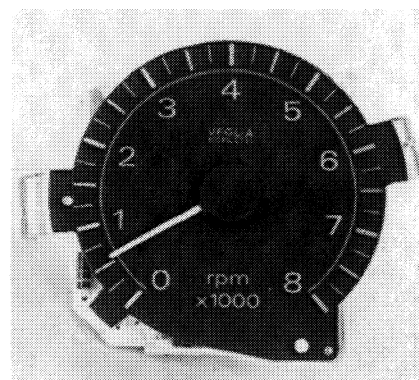
P3M061L02

### Dismantling-fitting fuel gauge

The arrows show the attachment nuts.



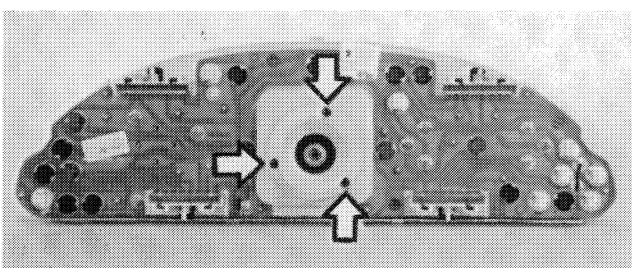
P3M061L03



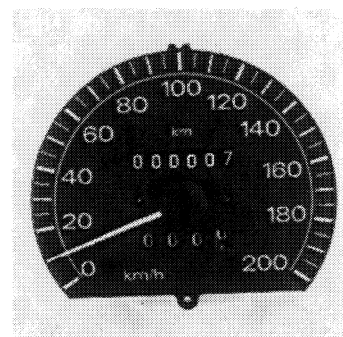
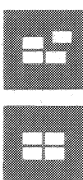
P3M061L04

### Dismantling-fitting rev counter

The arrows show the attachment nuts.



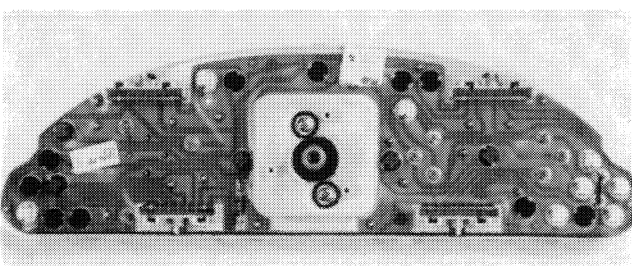
P3M061L05



P3M061L07

### Dismantling-fitting trip recorder/speedometer

- Undo the attachment screws indicated in the figure, then remove the cover (top picture);
- undo the nuts securing the trip recorder/speedometer (bottom picture);
- withdraw the instrument.

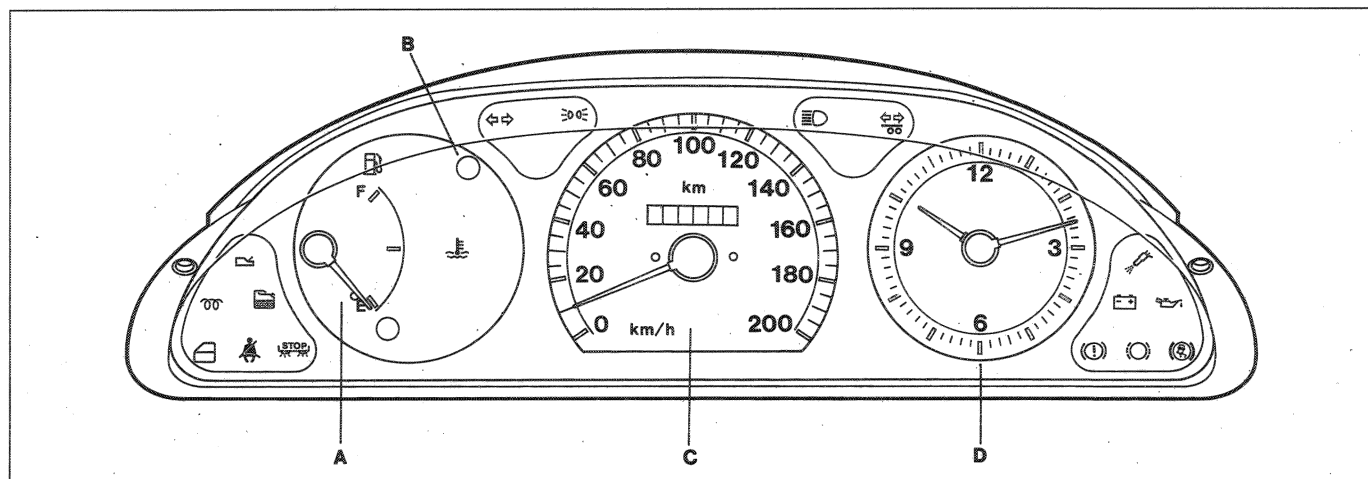


P3M061L06



#### FRONT/REAR VIEWS OF CONTROL PANELS WITH DESCRIPTIONS OF THE RELEVANT CABLES AND CONNECTORS

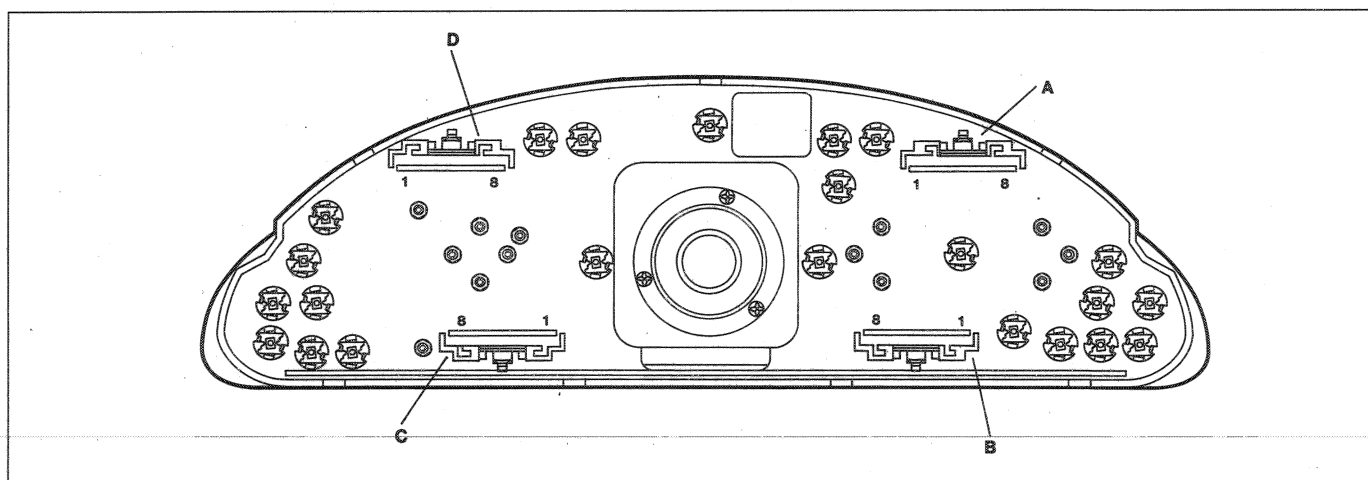
Versions: ED - S 55 - S 60 - S 75 - EL 75 - S TD



P3M001L01

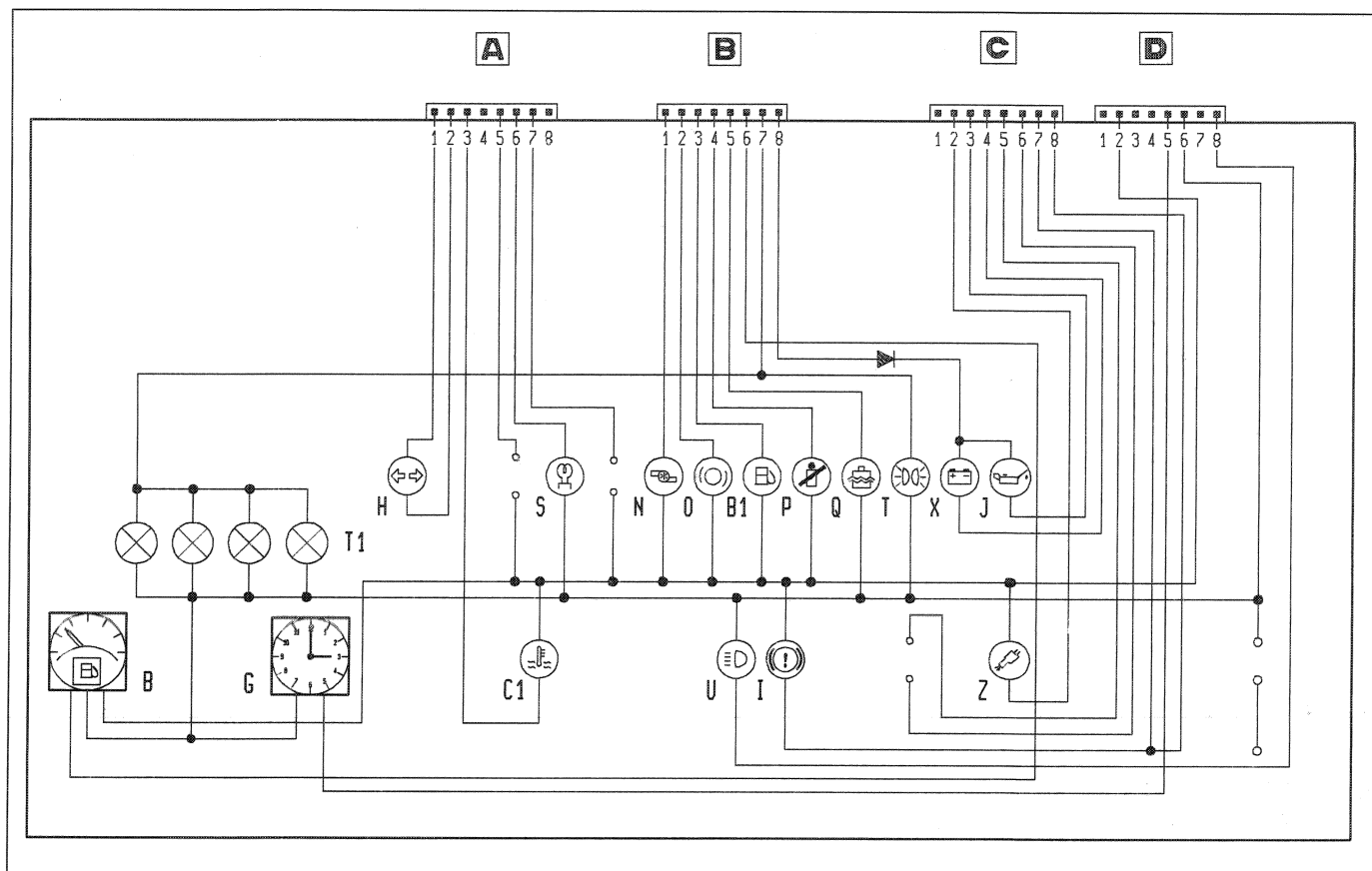
#### Front of instrument panel

- A) - Fuel gauge
- B) - Coolant temperature warning lamp
- C) - Mechanical trip recorder and speedometer
- D) - Clock



#### Rear of instrument panel (showing connector sockets)

## Wiring diagram of internal connections on instrument panel



P3M002L01

## WIRING COLOUR CODES AND DESCRIPTION OF THE CIRCUITS CONNECTED TO EACH CONNECTOR

CONNECTOR A		
Flat pin no.	Wire colour	Circuit involved
1	A	Direction indicators warning light (H)
2	AN	Direction indicators warning light (H)
3	HB	Maximum coolant temperature warning light (C1)
4	—	Not connected
5	—	Automatic gearbox oil overheating warning light (wiring)
6	LG	Heater plugs warning light (S)
7	—	Doors open warning light (wiring)
8	—	Not connected

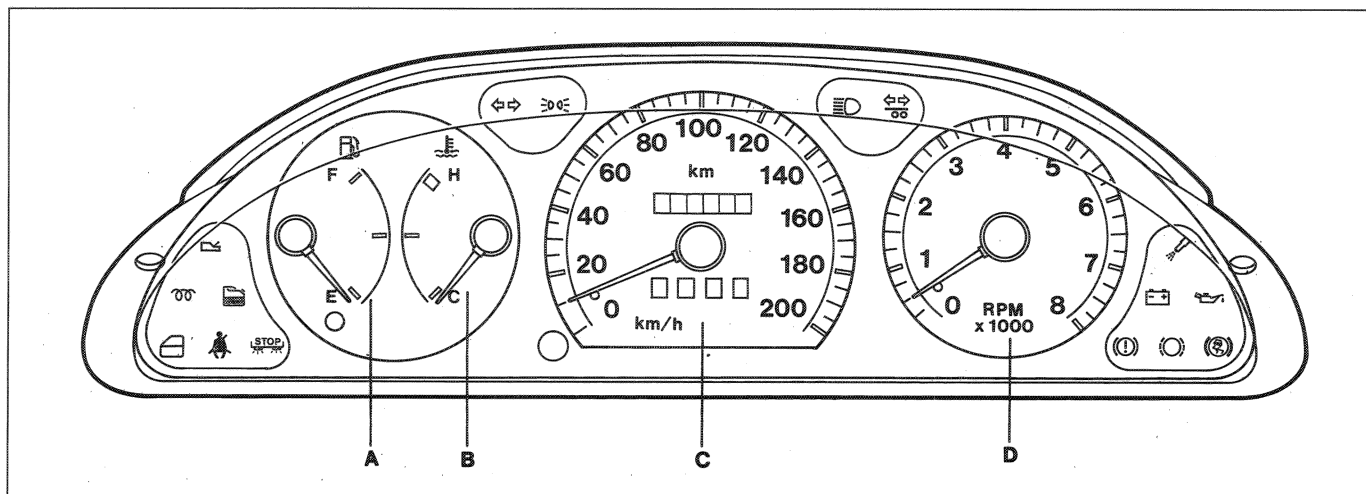
CONNECTOR B		
Flat pin no.	Wire colour	Circuit involved
1	HM	Turbocharging warning light (N)
2	VG	Brake pad wear warning lamp (O)
3	S	Fuel reserve warning light (B1)
4	—	Seat belt warning light (wiring) (P)
5	LN	Water in fuel filter warning light (Q)
6	HR	Fuel gauge control (B)
7	GN	Side lights warning lamp (T)
8	RN	+ 15 (not protected)

# 55.

CONNECTOR C		
Flat pin no.	Wire colour	Circuit involved
1	–	Not connected
2	LR	Fuel injection fault warning light (Z)
3	HG	Low engine oil pressure warning light (J)
4	HN	Low battery charge warning light (X)
5	CN	Anti-lock braking system (A.B.S.) fault warning light (wiring)
6	ZB	Anti-lock braking system (A.B.S.) fault warning light (wiring)
7	BR	Handbrake warning light (I)
8	BN	Low brake fluid warning light (I)

CONNECTOR D		
Flat pin no.	Wire colour	Circuit involved
1	–	Not connected
2	AR	+ 15 shared (protected)
3	–	Not connected
4	–	Not connected
5	R	+ clock (G)
6	N	Shared earth
7	–	Not connected
8	LB	Main beam warning light (U)

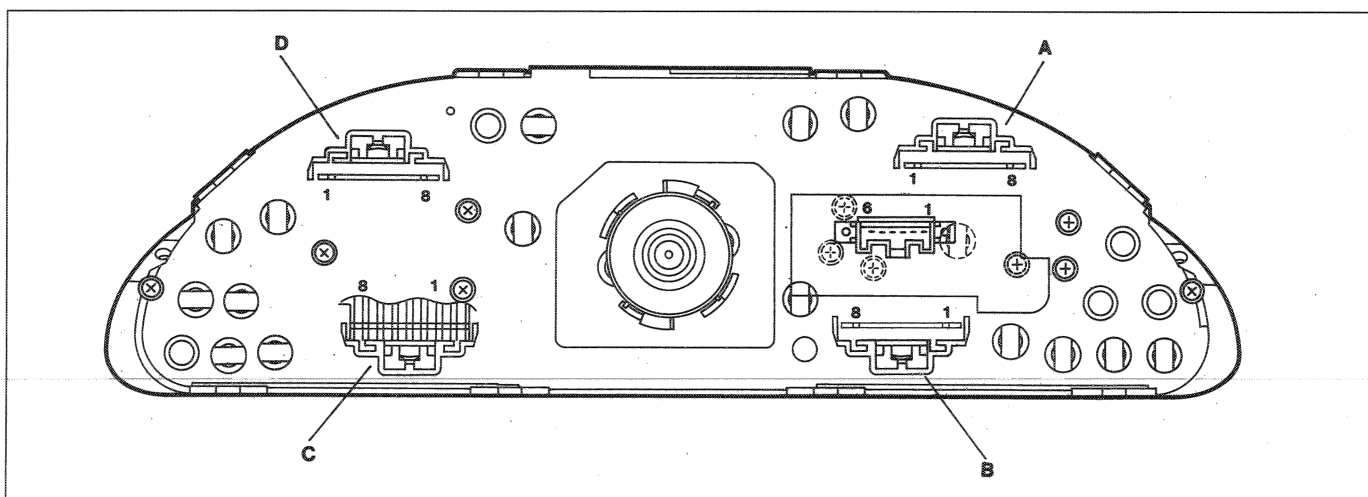
Versions: SX 55 - SX 60 - ELX 75 - SX TD



P3M004L01

### Front of instrument panel

- A) - Fuel gauge
- B) - Water temperature gauge
- C) - Mechanical speedometer and trip recorder
- D) - Mechanical rev counter



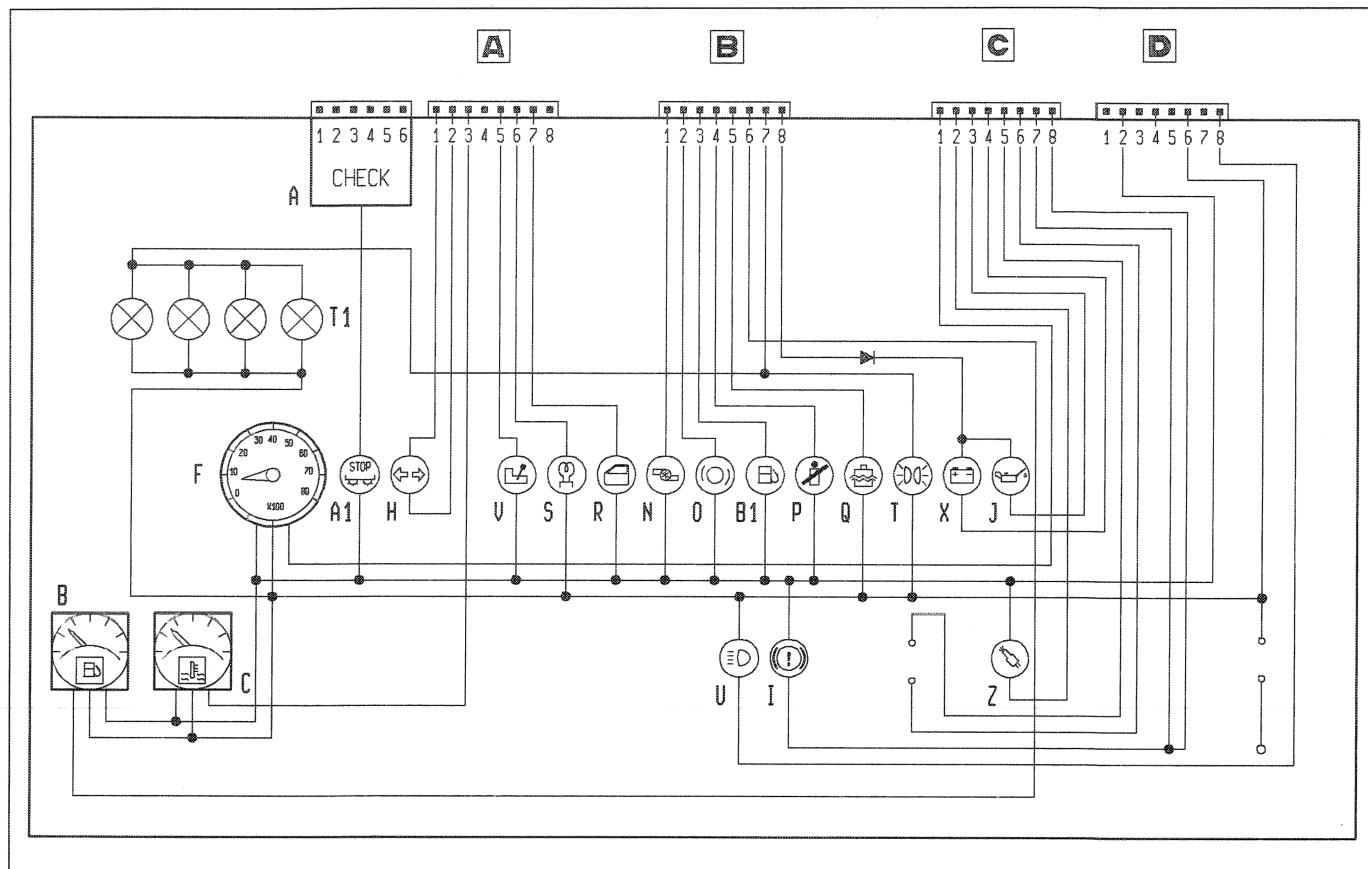
P3M004L02

### Rear of instrument panel (showing the connector sockets)



### 55.

#### Wiring diagram of internal connections of instrument panel



P3M005L01

#### WIRING COLOUR CODES AND DESCRIPTION OF THE CIRCUITS CONNECTED TO EACH CONNECTOR

CONNECTOR A		
Flat pin no.	Wire colour	Circuit involved
1	A	Direction indicators warning light (H)
2	AN	Direction indicators warning light (H)
3	HB	Maximum coolant temperature warning light (C)
4	—	Not connected
5	—	Automatic gearbox oil overheating warning light (wiring)
6	LG	Heater plugs warning light (S)
7	VB	Doors open warning light (R)
8	—	Not connected

CONNECTOR B		
Flat pin no.	Wire colour	Circuit involved
1	HM	Turbocharging warning light (N)
2	VG	Brake pad wear warning lamp (O)
3	S	Fuel reserve warning light (B1)
4	—	Seat belt warning light (wiring) (P)
5	LN	Water in fuel filter warning light (Q)
6	HR	Fuel gauge control (B)
7	GN	Side lights warning lamp (T)
8	RN	+ 15 (not protected)

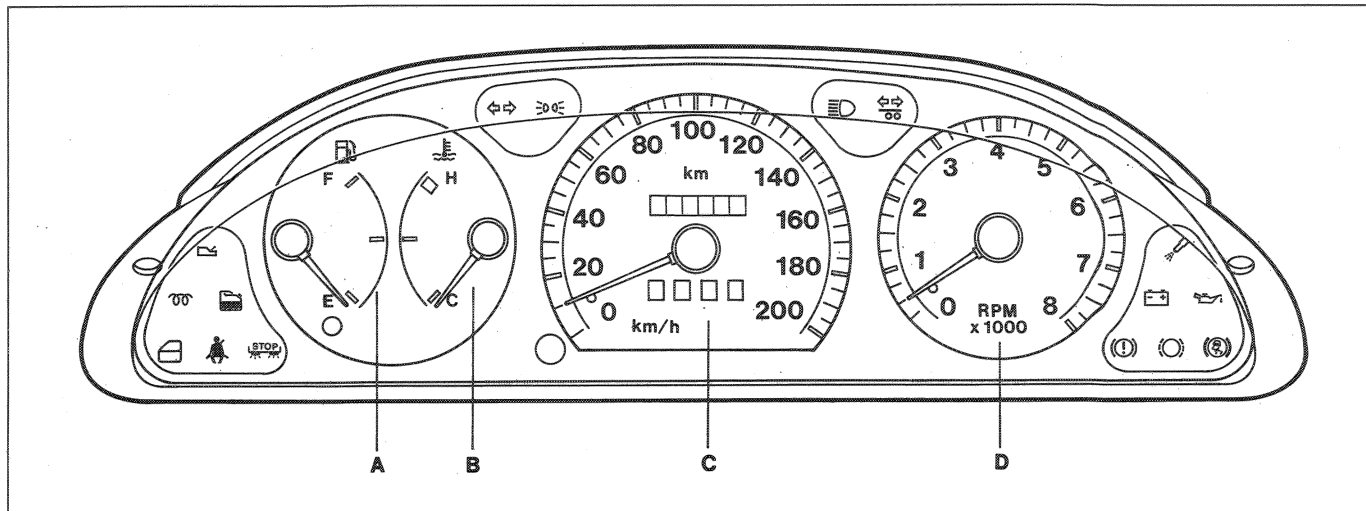
CONNECTOR C		
Flat pin no.	Wire colour	Circuit involved
1	L	Rev counter signal (F)
2	LR	Fuel injection fault warning light (Z)
3	HG	Low engine oil pressure warning light (J)
4	HN	Low battery charge warning light (X)
5	CN	Anti-lock braking system (A.B.S.) fault warning light (wiring)
6	ZB	Anti-lock braking system (A.B.S.) fault warning light (wiring)
7	BR	Handbrake warning light (I)
8	BN	Low brake fluid warning light (I)

CONNECTOR D		
Flat pin no.	Wire colour	Circuit involved
1	–	Not connected
2	AR	+ 15 shared (protected)
3	–	Not connected
4	–	Not connected
5	–	Not connected
6	N	Shared earth
7	–	Not connected
8	LB	Main beam warning light (U)

CHECK PANEL CONNECTION		
Flat pin no.	Wire colour	Circuit involved
1	RN	Stop lights switch + 30 N.A.
2	–	Not connected
3	RG	Left stop lights switch
4	RG	Right stop lights switch
5	AR	+ 15 shared (protected)
6	NZ	Electronic earth
	A1	Stop lights fault warning lamp

# 55.

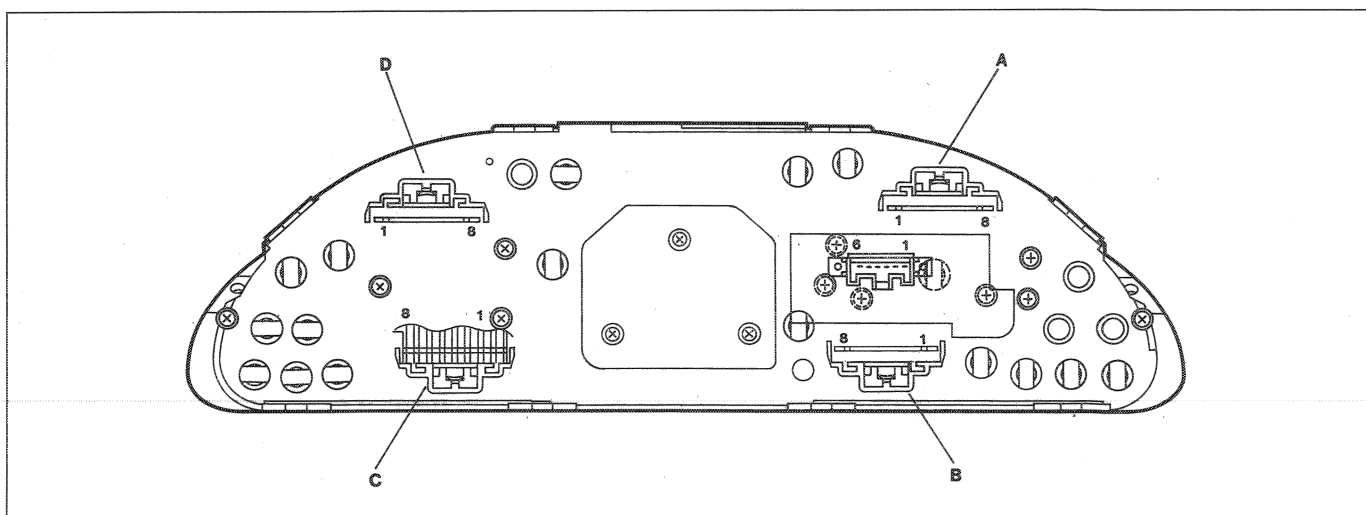
Versions: SX 75



P3M007L01

### Front of instrument panel

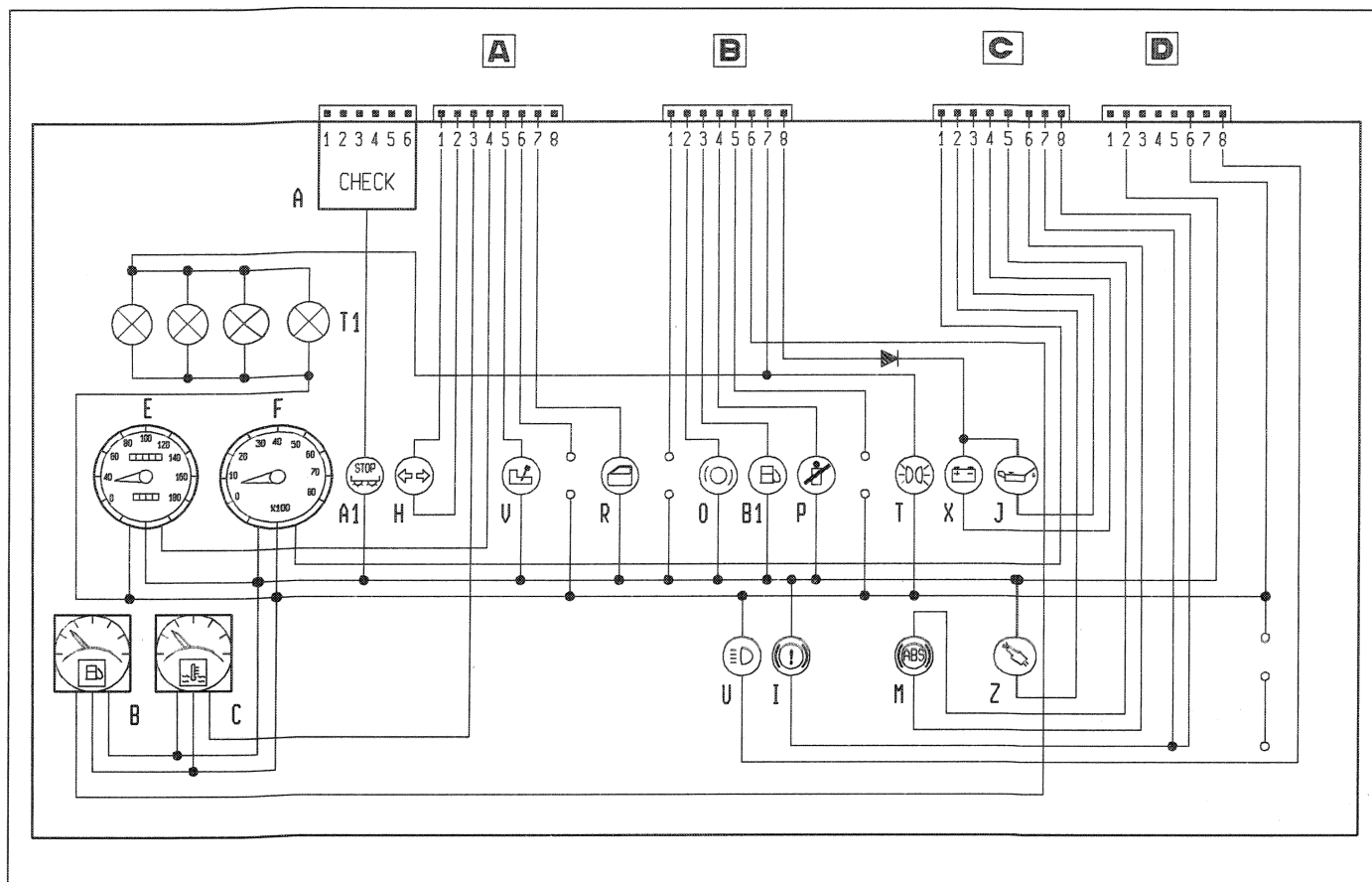
- A) - Fuel gauge
- B) - Water temperature gauge
- C) - Electronic speedometer and trip recorder
- D) - Electronic rev counter



P3M007L02

### Rear of instrument panel (showing the connector sockets)

## Wiring diagram of internal connections on instrument panel



P3M008L01

## WIRING COLOUR CODES AND DESCRIPTION OF THE CIRCUITS CONNECTED TO EACH CONNECTOR

CONNECTOR A		
Flat pin no.	Wire colour	Circuit involved
1	A	Direction indicators warning light (H)
2	AN	Direction indicators warning light (H)
3	HB	Maximum coolant temperature warning light (C)
4	AB	Speedometer signal (E)
5	—	Automatic gearbox oil overheating warning light (wiring) (V)
6	LG	Heater plugs warning light (wiring)
7	VB	Doors open warning light (R)
8	—	Not connected

CONNECTOR B		
Flat pin no.	Wire colour	Circuit involved
1	HM	Turbocharging warning light (wiring)
2	VG	Brake pad wear warning lamp (O)
3	S	Fuel reserve warning light (B1)
4	—	Seat belt warning light (wiring)
5	LN	Water in fuel filter warning light (wiring)
6	HR	Fuel gauge control (B)
7	GN	Side lights warning lamp (T)
8	RN	+ 15 (not protected)



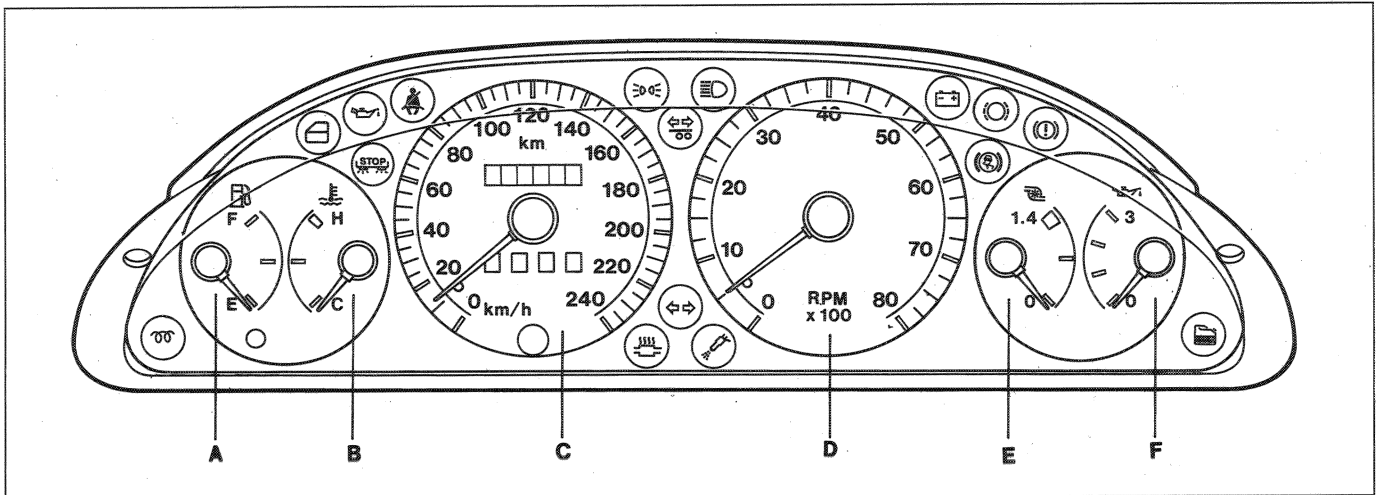
55.

CONNECTOR C		
Flat pin no.	Wire colour	Circuit involved
1	L	Rev counter signal (F)
2	LR	Fuel injection fault warning light (Z)
3	HG	Low engine oil pressure warning light (J)
4	HN	Low battery charge warning light (X)
5	CN	Anti-lock braking system (A.B.S.) fault warning light (M)
6	ZB	Anti-lock braking system (A.B.S.) fault warning light (M)
7	BR	Handbrake warning light (I)
8	BN	Low brake fluid warning light (I)

CONNECTOR D		
Flat pin no.	Wire colour	Circuit involved
1	–	Not connected
2	AR	+ 15 shared (protected)
3	–	Not connected
4	–	Not connected
5	–	Not connected
6	N	Shared earth
7	–	Not connected
8	LB	Main beam warning light (U)

CHECK PANEL CONNECTION		
Flat pin no.	Wire colour	Circuit involved
1	RN	Stop lights switch + 30 N.A.
2	–	Not connected
3	RG	Left stop lights connection
4	RG	Right stop lights connection
5	AR	+ 15 shared (protected)
6	NZ	Electronic earth
	A1	Stop lights fault warning lamp

Versions: GT - ELX TD\*

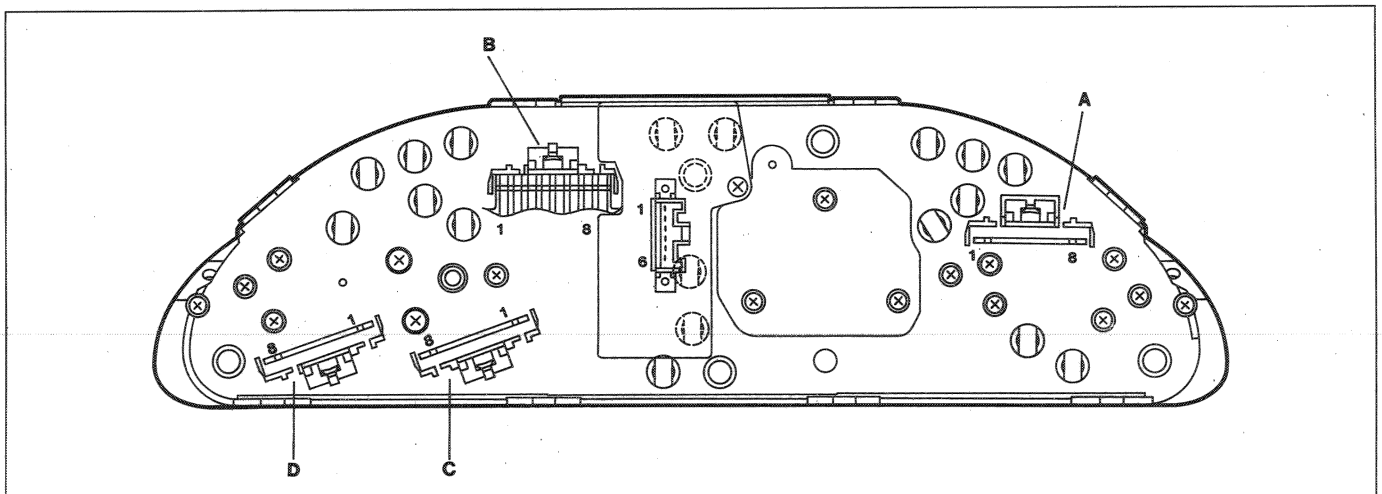


P3M010L01

#### Front of instrument panel

- A) - Fuel gauge
- B) - Water temperature gauge
- C) - Electronic speedometer and trip recorder
- D) - Electronic rev counter
- E) - Turbocharging warning light
- F) - Oil pressure gauge

(\*) The gauges on this version have a different full scale.

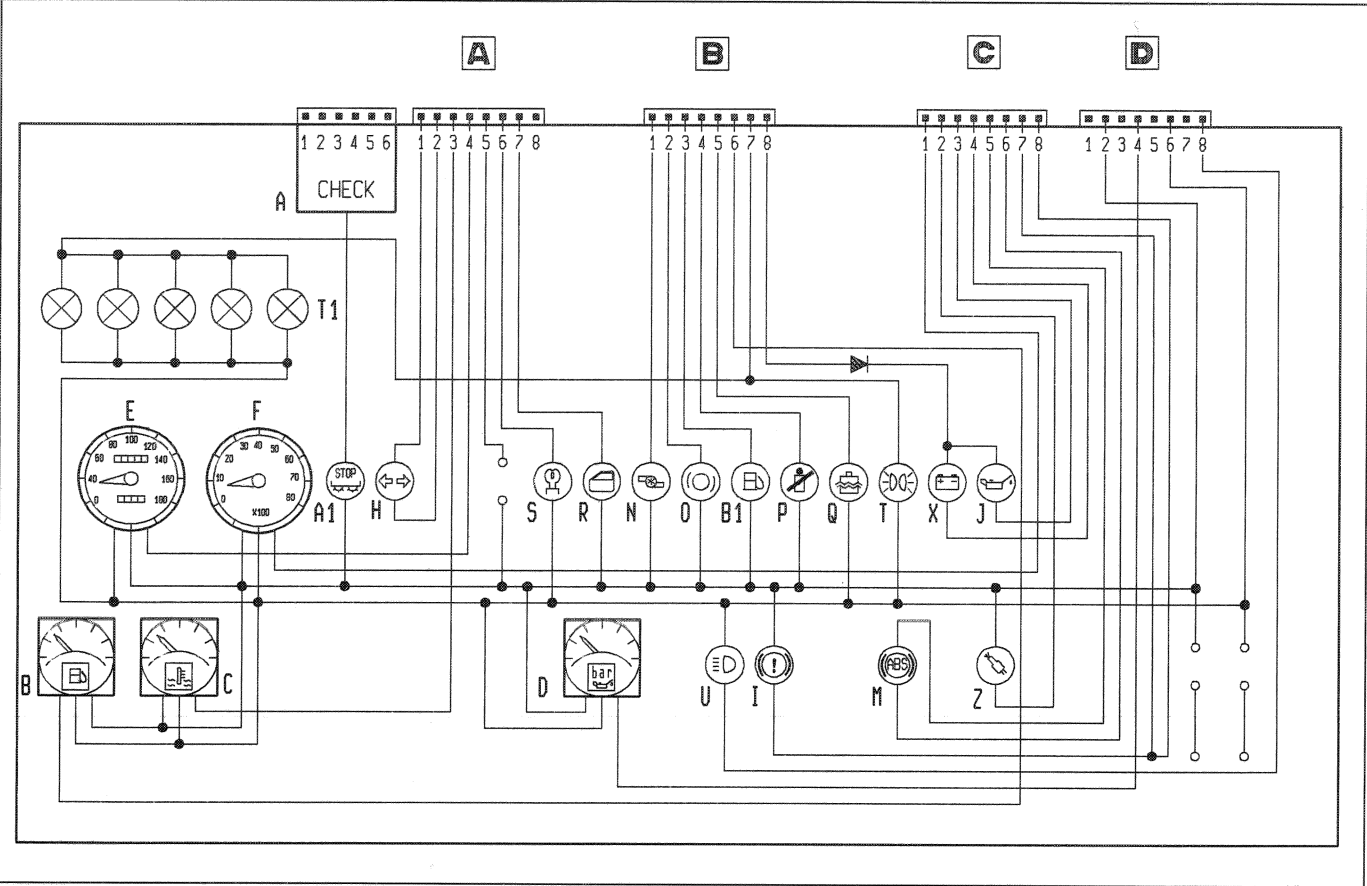


P3M010L02

#### Rear of instrument panel (showing the connector sockets)

55.

Wiring diagram of internal connections on instrument panel



P3M011L01

WIRING COLOUR CODES AND DESCRIPTION OF THE CIRCUITS CONNECTED TO EACH CONNECTOR

CONNECTOR A		
Flat pin no.	Wire colour	Circuit involved
1	A	Direction indicators warning light (H)
2	AN	Direction indicators warning light (H)
3	HB	Maximum coolant temperature warning light (C)
4	AB	Speedometer signal (E)
5	—	Automatic gearbox oil overheating warning light (wiring)
6	LG	Heater plugs warning light (S)
7	VB	Doors open warning light (R)
8	—	Not connected

CONNECTOR B		
Flat pin no.	Wire colour	Circuit involved
1	HM	Turbocharging warning light (N)
2	VG	Brake pad wear warning lamp (O)
3	S	Fuel reserve warning light (B1)
4	—	Seat belt warning light (wiring)
5	LN	Water in fuel filter warning light (Q)
6	HR	Fuel gauge control (B)
7	GN	Side lights warning lamp (T)
8	RN	+ 15 (not protected)

CONNECTOR C		
Flat pin no.	Wire colour	Circuit involved
1	L	Rev counter signal (F)
2	LR	Fuel injection fault warning light (Z)
3	HG	Low engine oil pressure warning light (J)
4	HN	Low battery charge warning light (X)
5	CN	Anti-lock braking system (A.B.S.) fault warning light (M)
6	ZB	Anti-lock braking system (A.B.S.) fault warning light (M)
7	BR	Handbrake warning light (I)
8	BN	Low brake fluid warning light (I)

CONNECTOR D		
Flat pin no.	Wire colour	Circuit involved
1	—	Not connected
2	AR	+ 15 shared (protected)
3	—	Not connected
4	—	Engine oil pressure signal (D)
5	—	Not connected
6	N	Shared earth
7	—	Not connected
8	LB	Main beam warning light (U)

CHECK PANEL CONNECTION		
Flat pin no.	Wire colour	Circuit involved
1	RN	Stop lights switch + 30 N.A.
2	—	Not connected
3	RG	Left stop lights connection
4	RG	Right stop lights connection
5	AR	+ 15 shared (protected)
6	NZ	Electronic earth
	A1	Stop lights fault warning lamp